

# MATERIAL PALETTE

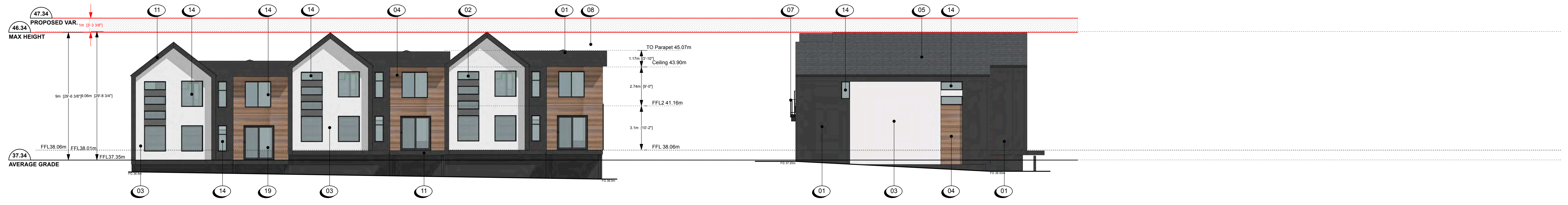
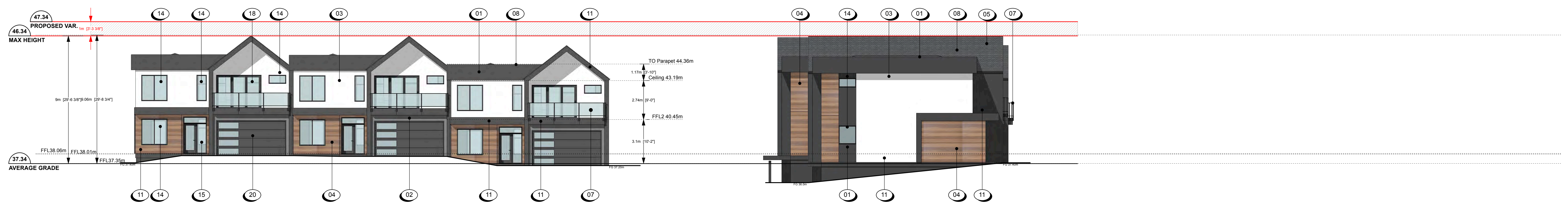
- 1 FIBRE CEMENT PANEL, COLOUR PLUS, SMOOTH FINISH, IN IRON GREY WITH ALUMINIUM FLASHING, COLOUR MATCHED TO IRON GREY
- 2 FIBRE CEMENT PANEL, COLOUR PLUS, SMOOTH FINISH, IN NIGHT GREY WITH ALUMINIUM FLASHING, COLOUR MATCHED TO NIGHT GREY
- 3 FIBRE CEMENT PANEL, COLOUR PLUS, SMOOTH FINISH, IN LIGHT MIST WITH ALUMINIUM FLASHING, COLOUR MATCHED TO LIGHT MIST
- 4 WOOD LOOK METAL PLANK SIDING, IN ESSPRESSO WITH WOOD GRAIN FINISH

- 5 SHINGLES, IN ESTATE GREY
- 6 WOOD, STAINED IN ENGLISH CHESTNUT
- 7 CLEAR TEMPERED GLASS GUARDRAILS WITH ALUMINIUM FRAME, IN IRON GREY
- 8 ALUMINIUM CAP AND TRIM FLASHING, IN IRON GREY
- 9 ALUMINIUM CAP AND TRIM FLASHING, IN NIGHT GREY
- 10 ALUMINIUM CAP AND TRIM FLASHING, IN LIGHT MIST
- 11 FASCIA BOARD, IN IRON GREY
- 12 FASCIA BOARD, IN NIGHT GREY

- 13 FASCIA BOARD, IN LIGHT MIST
- 14 VINYL FRAME WINDOW, IN IRON GREY
- 15 VINYL SWING DOOR IN IRON GREY WITH TEMPERED GLASS: PANEL, SIDE LIGHT AND TRANSOM
- 16 VINYL SWING DOOR IN IRON GREY WITH TEMPERED GLASS: PANEL AND TRANSOM
- 17 VINYL SWING DOOR IN IRON GREY WITH TEMPERED GLASS PANEL
- 18 3 PANEL, VINYL, SLIDING TEMPERED GLASS DOOR, IN IRON GREY
- 19 2 PANEL, VINYL, SLIDING TEMPERED GLASS DOOR, IN IRON GREY
- 20 OVERHEAD GARAGE DOOR WITH TEMPERED GLASS PANELS, IN IRON GREY



**BUILDING 1**



**BUILDING 2**

Scale: 3/32" = 1'0"

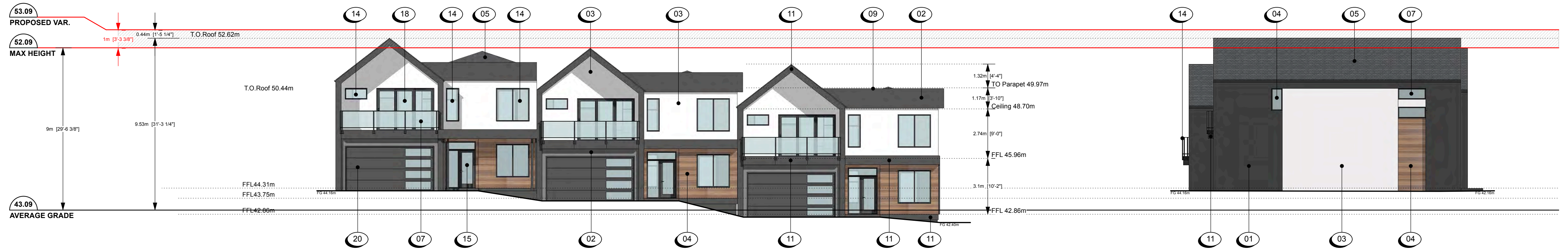
RECEIVED DP1317 2024-JAN-31

# MATERIAL PALETTE

- 1 FIBRE CEMENT PANEL, COLOUR PLUS, SMOOTH FINISH, IN IRON GREY WITH ALUMINIUM FLASHING, COLOUR MATCHED TO IRON GREY
- 2 FIBRE CEMENT PANEL, COLOUR PLUS, SMOOTH FINISH, IN NIGHT GREY WITH ALUMINIUM FLASHING, COLOUR MATCHED TO NIGHT GREY
- 3 FIBRE CEMENT PANEL, COLOUR PLUS, SMOOTH FINISH, IN LIGHT MIST WITH ALUMINIUM FLASHING, COLOUR MATCHED TO LIGHT MIST
- 4 WOOD LOOK METAL PLANK SIDING, IN ESSPRESSO WITH WOOD GRAIN FINISH

- 5 SHINGLES, IN ESTATE GREY
- 6 WOOD, STAINED IN ENGLISH CHESTNUT
- 7 CLEAR TEMPERED GLASS GUARDRAILS WITH ALUMINIUM FRAME, IN IRON GREY
- 8 ALUMINIUM CAP AND TRIM FLASHING, IN IRON GREY
- 9 ALUMINIUM CAP AND TRIM FLASHING, IN NIGHT GREY
- 10 ALUMINIUM CAP AND TRIM FLASHING, IN LIGHT MIST
- 11 FASCIA BOARD, IN IRON GREY
- 12 FASCIA BOARD, IN NIGHT GREY

- 13 FASCIA BOARD, IN LIGHT MIST
- 14 VINYL FRAME WINDOW, IN IRON GREY
- 15 VINYL SWING DOOR IN IRON GREY WITH TEMPERED GLASS: PANEL, SIDE LIGHT AND TRANSOM
- 16 VINYL SWING DOOR IN IRON GREY WITH TEMPERED GLASS: PANEL AND TRANSOM
- 17 VINYL SWING DOOR IN IRON GREY WITH TEMPERED GLASS PANEL
- 18 3 PANEL, VINYL, SLIDING TEMPERED GLASS DOOR, IN IRON GREY
- 19 2 PANEL, VINYL, SLIDING TEMPERED GLASS DOOR, IN IRON GREY
- 20 OVERHEAD GARAGE DOOR WITH TEMPERED GLASS PANELS, IN IRON GREY



**BUILDING 11**



**BUILDING 12**

Scale: 3/32" = 1'0"

4670 Hammond Bay Rd

Nanaimo, BC  
30Jan2024

Elevations. Buildings 11-12 <sup>A305</sup>

dHKarchitects dHka

RECEIVED  
DP1317  
2024-JAN-31  
Current Planning

# MATERIAL PALETTE

- 1 FIBRE CEMENT PANEL, COLOUR PLUS, SMOOTH FINISH, IN IRON GREY WITH ALUMINIUM FLASHING, COLOUR MATCHED TO IRON GREY
- 2 FIBRE CEMENT PANEL, COLOUR PLUS, SMOOTH FINISH, IN NIGHT GREY WITH ALUMINIUM FLASHING, COLOUR MATCHED TO NIGHT GREY
- 3 FIBRE CEMENT PANEL, COLOUR PLUS, SMOOTH FINISH, IN LIGHT MIST WITH ALUMINIUM FLASHING, COLOUR MATCHED TO LIGHT MIST
- 4 WOOD LOOK METAL PLANK SIDING, IN ESSPRESSO WITH WOOD GRAIN FINISH

- 5 SHINGLES, IN ESTATE GREY
- 6 WOOD, STAINED IN ENGLISH CHESTNUT
- 7 CLEAR TEMPERED GLASS GUARDRAILS WITH ALUMINIUM FRAME, IN IRON GREY
- 8 ALUMINIUM CAP AND TRIM FLASHING, IN IRON GREY
- 9 ALUMINIUM CAP AND TRIM FLASHING, IN NIGHT GREY
- 10 ALUMINIUM CAP AND TRIM FLASHING, IN LIGHT MIST
- 11 FASCIA BOARD, IN IRON GREY
- 12 FASCIA BOARD, IN NIGHT GREY

- 13 FASCIA BOARD, IN LIGHT MIST
- 14 VINYL FRAME WINDOW, IN IRON GREY
- 15 VINYL SWING DOOR IN IRON GREY WITH TEMPERED GLASS: PANEL, SIDE LIGHT AND TRANSOM
- 16 VINYL SWING DOOR IN IRON GREY WITH TEMPERED GLASS: PANEL AND TRANSOM
- 17 VINYL SWING DOOR IN IRON GREY WITH TEMPERED GLASS PANEL
- 18 3 PANEL, VINYL, SLIDING TEMPERED GLASS DOOR, IN IRON GREY
- 19 2 PANEL, VINYL, SLIDING TEMPERED GLASS DOOR, IN IRON GREY
- 20 OVERHEAD GARAGE DOOR WITH TEMPERED GLASS PANELS, IN IRON GREY



**BUILDING 13**



**BUILDING 14**



**BUILDING 15**

Scale: 3/32" = 1'0"

4670 Hammond Bay Rd

Nanaimo, BC  
30Jan2024

Elevations. Buildings 13-15 <sup>A306</sup>

dHKarchitects dHka

RECEIVED  
DP1317  
2024-JAN-31  
Current Planning